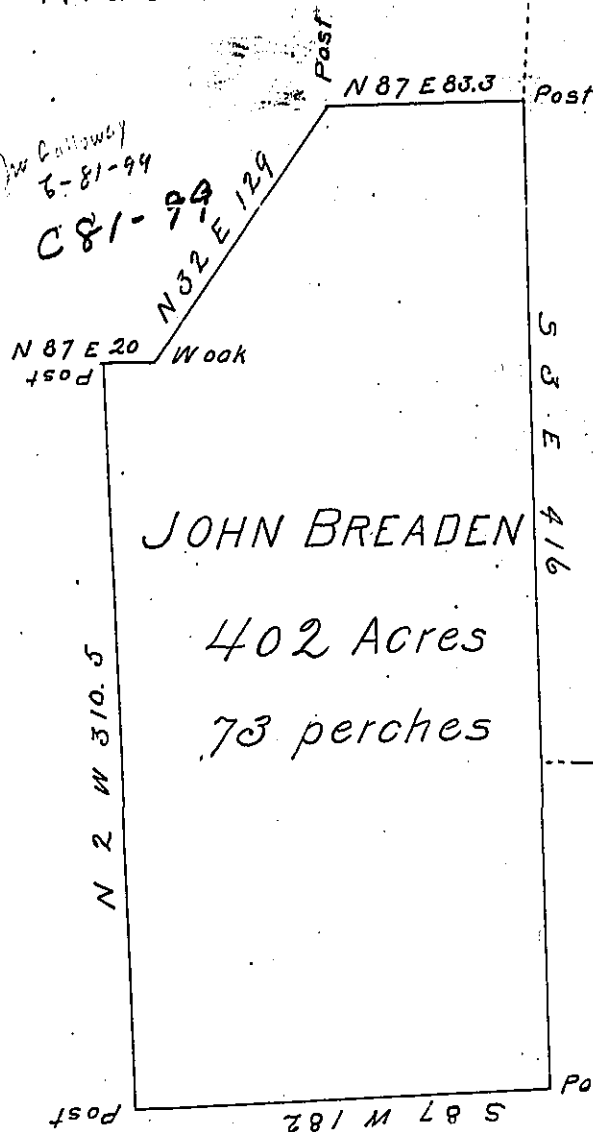


C 208-289

243

John Ridenhauer



Scale 100 perches to an inch

Situate in Wolf Creek Township Mercer County containing 402 acres 73 Perches and allowance Surveyed to 10th of Nov^r 1836 for John Breaden Impersuant of an actual Settlement made in ~~1798~~^{1802 or 3} By Jas Breaden Senior Jan'y 24th 1837

J. Alexander D. S.

John Taylor Esq. S. G.

IN TESTIMONY that the above is a copy of the original remaining on file in the Department of Internal Affairs of Pennsylvania, made conformably to an Act of Assembly approved the 16th day of February, 1833, I have hereunto set my Hand and caused the Seal of said Department to be affixed at Harrisburg, this first day of February 1904.

James P. Brown
Secretary of Internal Affairs.